

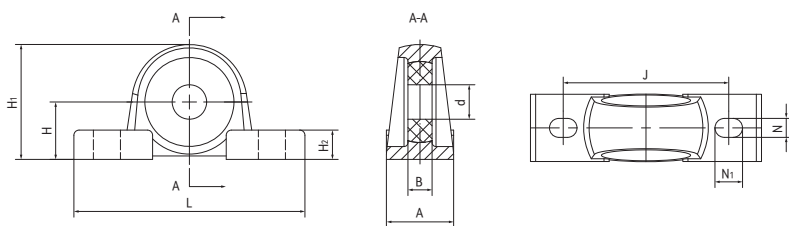
SP关节轴承座 Spherical bearing housing



产品特性 Product features

- 从UC204到UC208
 - 标准耐磨材料EPB13球体
可选: FDA等级球体EPB6、高温250°C球体EPB10
 - 不锈钢基座带有2个固定孔
 - 自润滑免维护
 - 高负载
 - 耐脏污
- UC204 up to UC208
 - Standard anti-wear composite EPB13 balls
available FDA grade material EPB6 or 250°C material EPB10
 - Stainless steel housing with 2 mounting holes
 - Maintenance-free dry operation
 - High load
 - Resistant to dirt

标准规格 Standard specifications



产品编码 Part No.:

SP204-20-17-EPB13

材料 Material

宽度 Width

内径 Inner diameter

| 产品编码 Part No. | d [mm] | d公差 Tolerance [mm] | B _{±0.1} [mm] | A [mm] | H [mm] | H ₁ [mm] | H ₂ [mm] | N [mm] | N ₁ [mm] | J [mm] | L [mm] | 最大静态径向 抗压强度 Max. radial static compressive strength [KN] | 最大静态轴向 抗拉强度 Max. axial static tensile strength [KN] | 最大调 节角度 Max. pivot angle | 重量 Weight [g] |
|-------------------|-----------|--------------------------|---------------------------|-----------|-----------|------------------------|------------------------|-----------|------------------------|-----------|-----------|---|---|--------------------------------------|---------------------|
| SP204-20-17-EPB13 | 20 | +0.040/+0.124 | 17 | 33 | 33.3 | 63 | 11 | 13 | 19 | 95 | 125 | 11.5 | 7.5 | 19° | 284 |
| SP205-25-17-EPB13 | 25 | +0.040/+0.124 | 17 | 36 | 36.5 | 68 | 13 | 13 | 19 | 105 | 133 | 14.5 | 7.5 | 15° | 339 |
| SP206-30-19-EPB13 | 30 | +0.040/+0.124 | 19 | 42 | 42.9 | 80 | 15 | 17 | 23 | 121 | 155 | 19.5 | 9.5 | 15° | 522 |
| SP207-35-20-EPB13 | 35 | +0.050/+0.150 | 20 | 48 | 47.9 | 93 | 18 | 17 | 23 | 127 | 167 | 24.0 | 10.5 | 16° | 800 |
| SP208-40-21-EPB13 | 40 | +0.050/+0.150 | 21 | 54 | 49.2 | 106 | 18 | 17 | 23 | 137 | 184 | 29.0 | 12.0 | 15° | 1100 |